

ALL IN ONE SOLAR LED STREET LIGHT

AdvanLED

Product Specification

Model	: AVL-SSL-080-SOL-35K-G1
Lumen (lm)	: 12000
Efficiency (lm/W)	: > 150
Colour Temperature, CCT (K)	: 3500K (35)
Colour Rendering Index (CRI)	: 70
Beam Angle (°)	: T203 (65°*150°)
Spigot Depth	: >=100mm
IP Rating	: IP 65
Discharge Time	: 2 Days
Materials	: Alluminum, SPCC
Lifespan/Warranty	: 5 yrs on Solar Panels, Light Fixture & Battery
Finishing Color	: Black
Working Humidity (% RH)	: 10 ~ 90
Storage Temp. (°C)	: -20°C to 45°C (-4°F to 113°F)



Battery Specification

Battery Voltage (Vdc)	: 25.6
Battery Capacity (Ah)	: 45
Battery (WHr)	: 1152
Battery Type	: LiFePO ₄ (Lithium Iron phosphate)
Operating Temp. (°C)	Power charge: 0°C - 60°C; Power discharge: -20°C - 60°C
Battery Life Cycle	: ≥ 2000 times

Solar Specification

Solar Panel (W)	: 160W
Solar Voltage (Vdc)	: DC36V
Solar Type	: Mono-crystalline Silicon Panel

Working Mode

4Hrs @ 100%, 2Hrs @ 60%, 6Hrs @ 40%; Operation: 12 Hours

Remark:

Application: Outdoor Application | Street Lighting | Compound Lighting | Walkway Lighting



Malaysian Brand



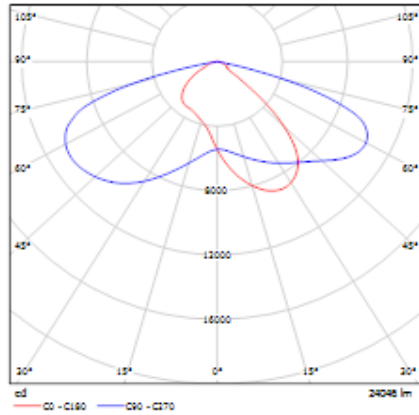
MADE IN MALAYSIA

AdvanLED

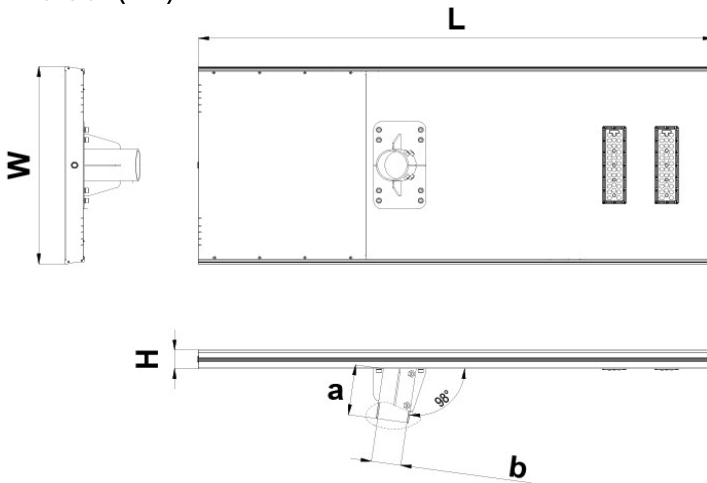
ALL IN ONE SOLAR LED STREET LIGHT

AdvanLED

Photometric Result :

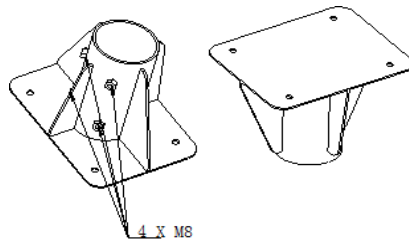


Dimension (mm) :



2 Modules

Length (L)	1475
Width (W)	585.1
Height (H)	55
Length (a)	145
Diameter (b)	94
Weight (Kg)	34



LIFE TIME **50K HOURS**

LM80
LED LM 80
50K HRS

IP65
INGRESS PROTECTION

ISO 9001
BUREAU VERITAS
Certification

Malaysian Brand

MADE IN MALAYSIA

AdvanLED

ALL IN ONE SOLAR LED STREET LIGHT

AdvanLED

Product Specification

Model	: AVL-SSL-120-SOL-35K-G1
Lumen (lm)	: 20000
Efficiency (lm/W)	: > 167
Colour Temperature, CCT (K)	: 3500K (35)
Colour Rendering Index (CRI)	: 70
Beam Angle (°)	: T203 (65°*150°)
Spigot Depth	: >=100mm
IP Rating	: IP 65
Discharge Time	: 2 Days
Materials	: Alluminum, SPCC
Lifespan/Warranty	: 5 yrs on Solar Panels, Light Fixture & Battery
Finishing Color	: Black
Working Humidity (% RH)	: 10 ~ 90
Storage Temp. (°C)	: -20°C to 45°C (-4°F to 113°F)



Battery Specification

Battery Voltage (Vdc)	: 25.6
Battery Capacity (Ah)	: 75
Battery (WHr)	: 1920
Battery Type	: LiFePO ₄ (Lithium Iron phosphate)
Operating Temp. (°C)	Power charge: 0°C - 60°C; Power discharge: -20°C - 60°C
Battery Life Cycle	: ≥ 2000 times

Solar Specification

Solar Panel (W)	: 240W
Solar Voltage (Vdc)	: DC36V
Solar Type	: Mono-crystalline Silicon Panel

Working Mode

4Hrs @ 100%, 2Hrs @ 60%, 6Hrs @ 40%; Operation: 12 Hours

Remark:

Outdoor Application



Malaysian Brand



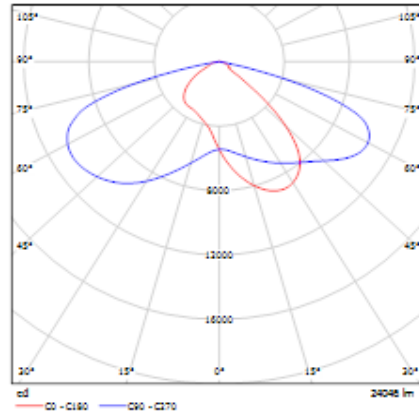
MADE IN MALAYSIA

AdvanLED

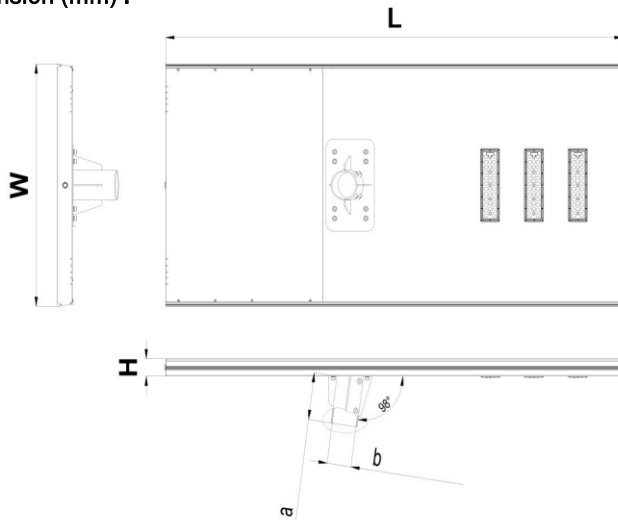
ALL IN ONE SOLAR LED STREET LIGHT

AdvanLED

Photometric Result :

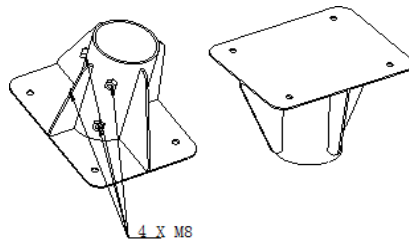


Dimension (mm) :



3 Modules

Length (L)	1615
Width (W)	765.1
Height (H)	55
Length (a)	145
Diameter (b)	94
Weight (Kg)	43.5



AdvanLED