

Smart City

SOLUTIONS



AdvanCTi

BY LED VISION SDN BHD



LED VISION SDN BHD (522660-P)

Address: No 109, Jalan PM 1, Taman Perindustrian
Merdeka, Batu Berendam, 75350 Melaka, Malaysia.

Email: sales@ledvision.com.my

Line: +606-317 3668 Fax: +606-317 3882

Website: www.ledvision.com.my



ClearSight (Artificial Intelligence CCTV)

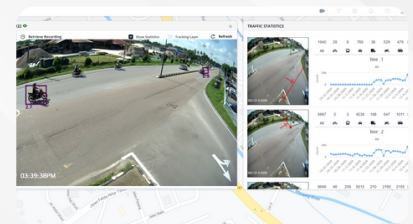
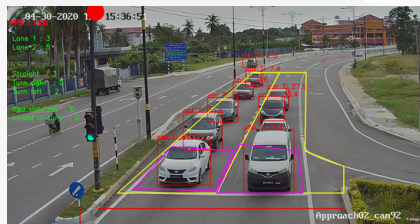
FEATURES :

- ✓ Vehicle Classification
- ✓ Vehicle Counting
- ✓ Waiting Time Calculation
- ✓ Journey Time Calculation
- ✓ Illegal Maneuver Detection
- ✓ License Plate Recognition
- ✓ Incident Detection
- ✓ Vehicle Tracking

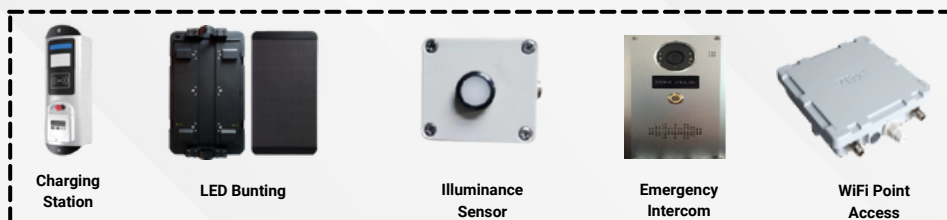


WHAT IS CLEAR SIGHT?

Clear Sight is a traffic video analytics on demand CCTV, made possible by breakthroughs in machine learning and **A.I at-the-edge technology**. This enables our city to generate and validate real-time details and insights on our city's traffic.



Other Add-ons



TECHNICAL PARAMETERS



ITEM		PARAMETER VALUES	REMARKS
Image Sensor		1/1.8" progressive scan	
Sensor Resolution		SONY IMX-334 CMOS image sensor (support HDR)	
Lens		Auto focus zoom lens	
F Number		F 1.47~2.5±5%, DC-Iris or Fixed-Iris	
Focus Length		4.46~11mm±5%	
FOV	Horizontal angel of view	110.9°(W)40.03°(T)	
	Vertical angel of view	57.4°(W)22.59°(T)	
	Diagonal angel of view	136.6°(W)45.98°(T)	
Minimum Illumination		Color-0.05Lux@F max. 50IRE,1/30s B&W-0.01Lux@F max. 50IRE,1/30s, 0 lux with IR on	TBD
Shutter Time	Capture frequency 50Hz	1/8000s ~ 1/25s	
	Capture frequency 60Hz	1/8000s ~ 1/30s	
Day and Night Functionality (ICR)		Auto/Color/Monochrome	
LED Working Distance		30M	0.1uW
Stream Settings	Stream	Single stream / Dual streams (outbound)The 3rd stream fixed to 720p H.264 30fps for browser only	
	Video Encoding	H.265: enabled by customer's request, license issue) H.264 base/main/high profile MJPEG: JPEG hardware encoder function reserved for A.I application (e.g. sending face snapshots)	
	Resolutions	(16:9): 1920x1080, 1280x720,640x360(4:3): 1600x1200, 1280x960,1024x768, 640x480	
	Rate Control	VBR(variable bit rate) / CBR (constant bit rate)	
	Frame Rate	1~25 (50Hz) 1~30 (60Hz)	
ROI (Region on Interest) [2nd phase]	Smart Stream	Medium / Standard / Good / Detailed / Excellent	
	Quality (Manual ROI)	Frame A / Frame B / Frame C	
	Frame Size (Manual ROI)	Height, Width (Pixels)from 30x30 pixels to 300x300 pixels.	
Number of Clients		5 Concurrent	
SD card function		Support	
White balance		Automatic , Manual (2000K ~ 10000K)	
Image Adjustment		Brightness / Contrast / Saturation / Sharpness	
Backlight Compensation		On / Off	
HDR		On / Off	
Digital Noise Reduction		2D NR, 3D NR	
Rotate View	Flip	Off, Horizontal, Vertical	
	Video Orientation	0°, 90°, 180°, 270°	
Power Line Frequency		Auto / 50Hz / 60Hz	
Exposure Control		Exposure Mode / Exposure Time / Gain Value	
Smart IR		Support	
Overlay		Date and Time / Camera Name / Image /Font Size/ Font Color	
Privacy Mask		Up to 8 masks can be added	
Lens Distortion Correction		On / Off	
Audio Compression		AAC only	
Audio Support		Two way audio, full duplex function without echo cancellation	





TECHNICAL PARAMETERS

ITEM		PARAMETER VALUES	REMARKS
Add Audio (2nd Phase)		Support	
LAN interface		IPv4 ; IPv6(2nd Phase) ; HTTP ; HTTPS ; SSL/TLS ; QoS Layer 3 diffserv ; FTP ; SMTP ; UPnP ; DNS client ; NTP client; RTSP ; RTP ; TCP ; UDP ; IGMP ; ICMP ; DHCP ; ARP	
Stream Transmission		Unicast / Multicast	
Security Mode	Password protection	Support	
	IP address filtering (2nd Phase)		
	HTTPS encryption		
	User access log (2nd phase)		
IP Notification (2nd Phase)		Email Notification / TCP Notification / HTTP Notification	
VPU		Movidius MA2485	
	Face Detection/Recognition	Support	
	Human Detection/Tracking		
	Object Detection/Tracking		
Analysis Data Transaction		Support	Object Index #, Probability, etc
AI Event triggers		Support	
OSD display		Support	
Casing		IK10+ IP66 (before IK10: IP67, after IK10: IP66. IK-10-- EN6226, IP66--EN60529), NEMA 4X	Bullet: front face excluded
Camera Angle Adjustment		3-Axis cable management bracket support	
Power Supply		12VDC / AC24V / PoE(IEEE 802.3at)	
Power Consumption		Typ.?W , Max.?W	
Operation temperature		IR ON: Operating temperature : -30°C ~ 40°C IR OFF: Operating temperature : -30°C ~ 60°C	TBD
Storage temperature		30°C ~ 60°C	
Operating Humidity		20% to 95% (non-condensing)	
Storage Humidity		20% to 90%	
Dimension (W*H*D)		84mm × 77mm X 165mm(w/o sunshield and 3-axis bracket)	
EMC Compliance		1. EN 55032 class A, EN55024 2. EN 50130-4 3. EN 50121-4 4. IEC 61000-6-1:2016 5. IEC 61000-6-2:2016	
VPU		Movidius MA2485	
Target AI	Face Detection/Recognition	Support	
	Human Detection/Tracking		
	Object Detection/Tracking		
Analysis Data Transaction		Support	
AI Event triggers		Support	
Safety Compliance		EN/IEC 60950-1 , EN/IEC 62368-1	
REACH		2002/96/EC,2012/19/EU	
ROHS		2002/95/EC,2011/65/EU,EN 50581:2012	
UL		Optional by customer request(design compliance). UL needs to include EN/IEC 62471)	
3rd Party Lab Certifications		CE(including ROHS, REACH, LVD) Class A / FCC / BSMI /IP66 / IP67 / IK10, ISTA 2A Shock and Vibration	
Vibration /Shock		GB/T 15211-2013(CN Environmental testing for alarm systems (surveillance))	
Anti-corrosion		GB2423.17 (IEC60068-2-11) Outdoor use: Neutral salt spray test for 10 days	
Packaging Transport tests		ISTA-2A: 2011	
LED indicator		Power / Network / Firmware upgrade status	
Hard reset key		Yes	
Power Input		2 pin terminal block (at output cable)	
Ground Wire		Support (at output cable)	
Ethernet interface		1x 10/100/1000 Base-T self-adaptive Ethernet port, RJ-45 female (at output cable), with male mating connector set	
Audio interface	Line in/Mic. In	Bare wire (at output cable)	
	Line out	Bare wire (at output cable)	
Memory card slot		1x Micro-SD ; SD / SDHC /SDXC UHS-I, 32GB to 256GB, class 10 or higher is recommended	
Alarm Input/Output		1 Input (Dry Contact, bare wire), 1 Relay Output (bare wire), at output cable	

A low-angle, night-time photograph of the Petronas Towers in Kuala Lumpur, Malaysia. The towers are illuminated with warm yellow lights from their windows, contrasting against a dark, overcast sky. The towers' unique tiered, spire-like structure is clearly visible. In the foreground, there are blurred light trails from traffic and streetlights, adding a sense of motion and urban atmosphere. A dark blue banner with white and orange text is overlaid on the center of the image.

AdvanCTi

BY LED VISION SDN BHD



LED VISION SDN BHD (522660-P)

Address: No 109, Jalan PM 1, Taman Perindustrian
Merdeka, Batu Berendam, 75350 Melaka, Malaysia.

Email: sales@ledvision.com.my

Line: +606-317 3668 Fax: +606-317 3882

Website: www.ledvision.com.my

